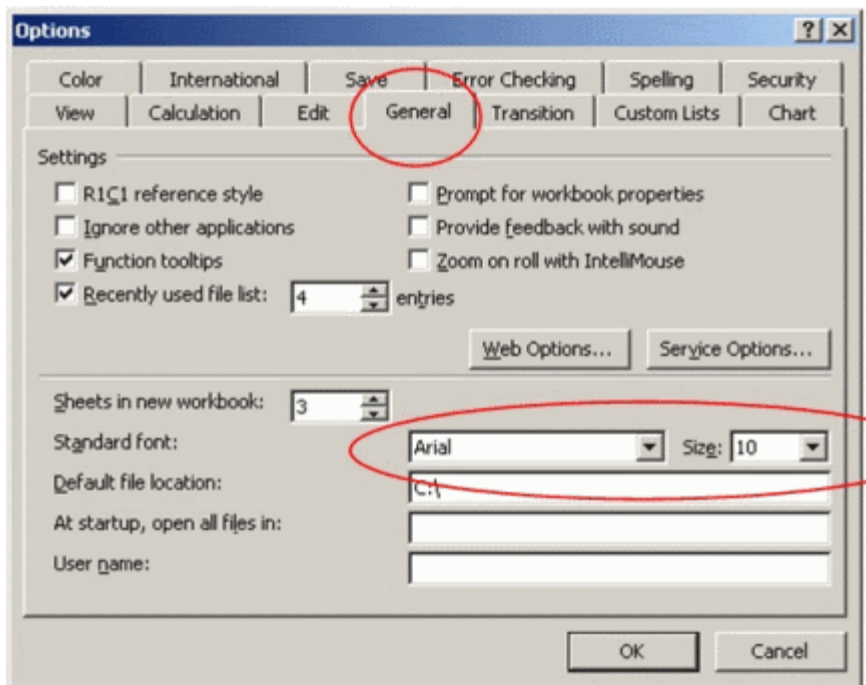


Component Performance Approach:

The CPWorksheets are designed to document the qualification of building designs by the component performance approach described in Chapter 5 of the Washington State Energy Code 2006 Edition (WSEC). Please refer to the restrictions on the copyright worksheet before using.

We have tested the worksheets with Microsoft® Excel® for Microsoft® Windows®. All functions should work with Excel versions 98 or later. Excel 95 will work, but the "comments" will not appear. The worksheets also work on contemporary Macs.

The worksheets are designed to display correctly when Arial 10 point font is used. If your standard font is other than this, you may have difficulty reading the worksheets. To correct this problem, go to the | Tools | Options menu, select the "General" tab, and make sure that Arial 10 point is your standard font. If you have difficulty seeing font this size, we recommend changing the magnification through the | View | Zoom menu, or by holding down the <Ctrl> button while scrolling your mouse wheel up.



The CPWorksheets file contains thirteen Microsoft® Excel® worksheets, four sheets which calculate component performance, and nine that contain the component libraries. For guidance in use of the worksheets, refer to the "Instructions" worksheet. Download the [CPWorksheets](#) - includes all climate zones and building types, as well as the component libraries

Note: The component library worksheets provide the default component u-factors from chapter 10 of the WSEC. These are the u-factors necessary to complete most projects. Each of the worksheets contains space for users to input custom components as needed.

*Previous versions of this workbook required opening a separate workbook containing the component libraries (CPLibrary.xls.) This current version consolidates these two workbooks into one. If you have been maintaining your own custom library entries, you will need to copy the custom entries from your original CPLibrary worksheet into the appropriate tab of this worksheet (do not copy the entire worksheets from the original CPLibrary worksheet - these entries will not be recognized by the component performance worksheets. **We strongly advise that you keep your original CPLibrary worksheet as a backup.***